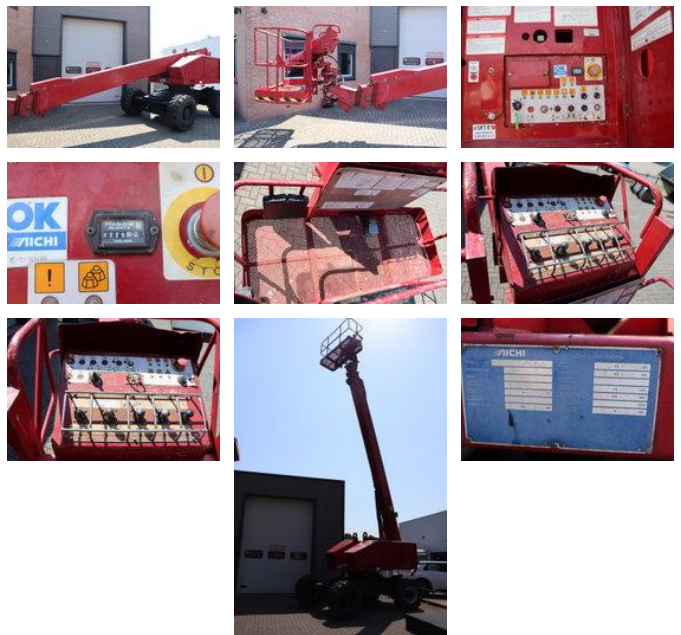


Aichi SP18A

General features

Brand	Aichi
Subcategory	Telescopic boom lift wheeled
Construction year	2001
Hourmeter reading	2252
Condition	Used
Fuel	Diesel
CE marking	Yes



Characteristics

GVW	12.300kg
Lifting capacity	227kg

Aichi SP18A

Accessories